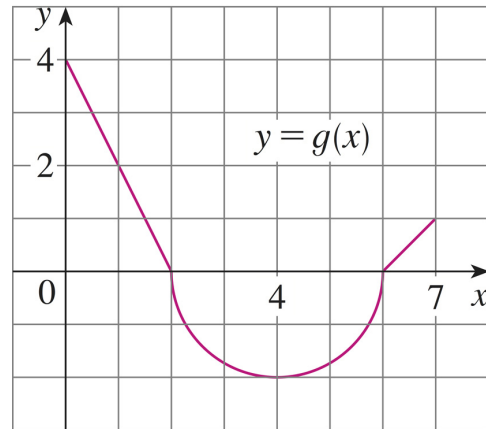


Name:

Sec. 5.2 – The definite integral

Math 251

1. The graph of  $g$  is given below Use the graph to evaluate



(a)  $\int_0^2 g(x) dx$

(b)  $\int_2^6 g(x) dx$

(c)  $\int_0^7 g(x) dx$

2. Evaluate the following

(a)  $\int_{-3}^4 \left| \frac{1}{2}x \right| dx$

(b)  $\int_{-3}^0 (1 + \sqrt{9 - x^2}) dx$